



Integrating EasyCODE into i-Logix Rhapsody

Requirements:

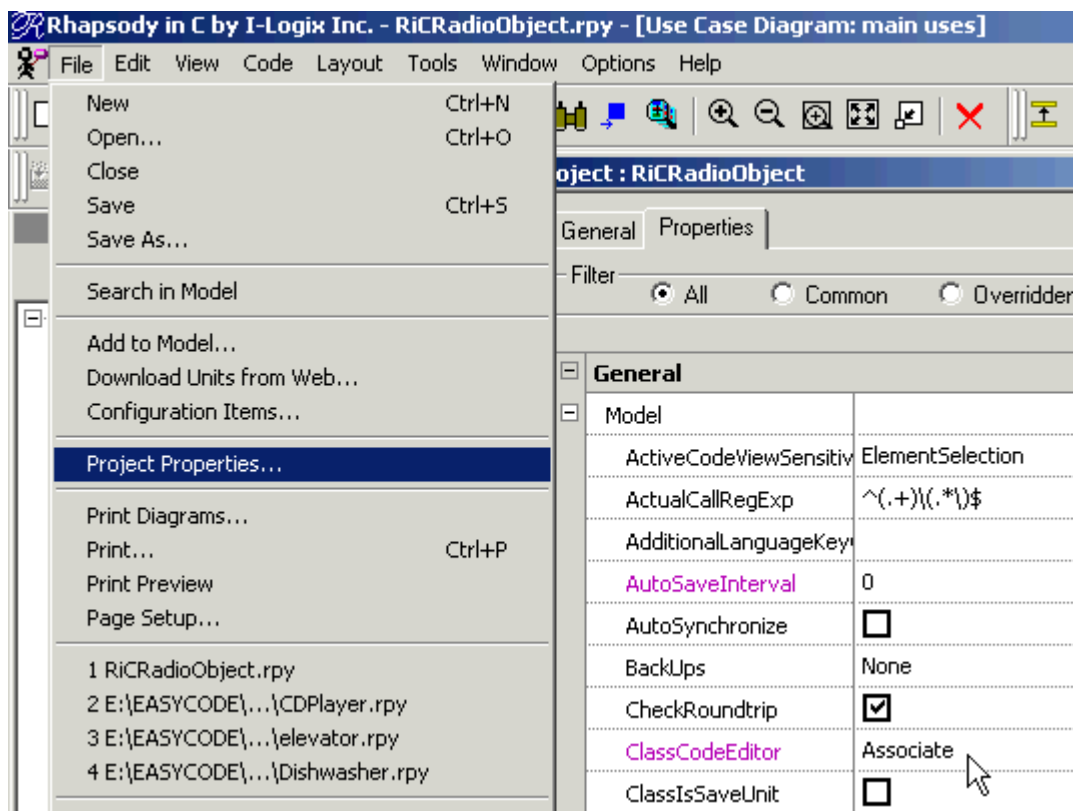
EasyCODE V7.x and Rhapsody 4.2 or higher must be installed. The Standard Setup can be used for both applications. Please assure that EasyCODE is assigned to *.c, *.cpp und *.h files on your system.

Motivation:

Usually UML-tools offer very limited support for the implementation. Following strictly the UML convention it is not necessary to have a powerful editor, because methods does not become complex. Unfortunately, in practice projects become more and more complex, even in UML projects. Therefore, developers will go back to their common used Editor for implementation purposes. If you are not able to write back modifications automatically into the model, projects become inconsistent. Integrating EasyCODE assures that developers can use a comfortable, graphical Editor in an excellent UML environment, modifications where synchronized with the Model and the project stays consistent. Beside this request, EasyCODE can also be the interface to Compiler- and Debugger-IDEs.

Configuration:

1. Run Rhapsody and open an existing project. Open the "Objects folder" from the Model-Viewer and generate the selected object.
2. Select „Project Properties" from the File-Menu to set the project properties for the whole project. The menu item related to EasyCODE is available under the „Properties" tab. Mark "All" and set the entry in the line "ClassCodeEditor" from „Internal" to „Associate". Confirm the setting clicking the "OK" Button.



3. From now on EasyCODE will start up and load the file, whenever you select „Edit Object“ from the methods context menu. Modifications made in EasyCODE where recognized by Rhapsody, when the changes have been saved and the EasyCODE Editor where closed. Rhapsody will ask for action, how to handle the modified file.

Selecting „Roundtrip Engineering“ overtakes the modifications and writes the changes back into the model. Working this way assures that there will not appear inconsistencies between Model, Implementation and Documentation.

An Error Message: „Class is out of Scope“ means, that the object is not generated yet. Repeat the object generation.

Please contact our EasyCODE Supportteam for any further questions on EasyCODE ort his integration. Contact i-Logix for any questions on Rhapsody.

Contact:

EASYCODE GmbH

Loewenberger Strasse 50
D-90475 Nuernberg

Tel: 0049-911-99 840-60

Fax: 0049-911-99 840-97

e-mail: info@easycode.de
support@easycode.de