

Integration with TRACE 32 from Lauterbach Datentechnik

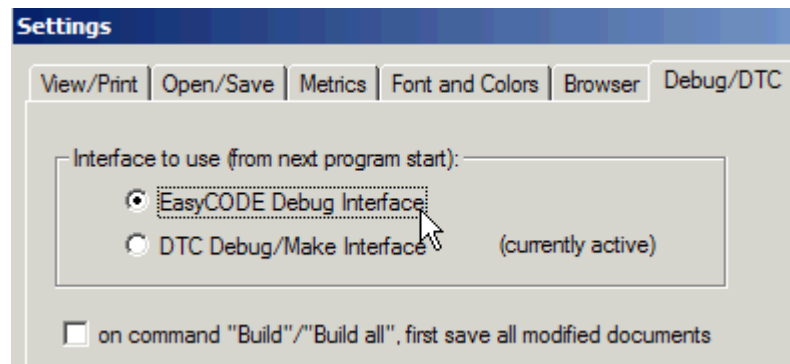
Requirements:

EasyCODE V7.x or higher and Lauterbach TRACE 32 must be installed. The Standard Setup can be used for booth applications.

If you are not a Lauterbach customer and would like to evaluate this integration before you decide to purchase, please run the Trial from the Zip-Archive. Beside the requested file "EasyT32.exe" it contains also a simulator. Extract the folder anywhere on your hard disk and run the file „T32MPPC.exe“. A Trace 32 trial version will start with a small sample. Run the file „EasyT32.exe“ next, if EasyCODE is set up for use with TRACE 32.

Configuration:

1. Run the EasyCODE Editor and go to „Options\Settings“ from the menu bar. Click the „Debug\DTC“ tab and activate the „EasyCODE Debug Interface“. Please note that the Editor must be restarted that changes take effect.

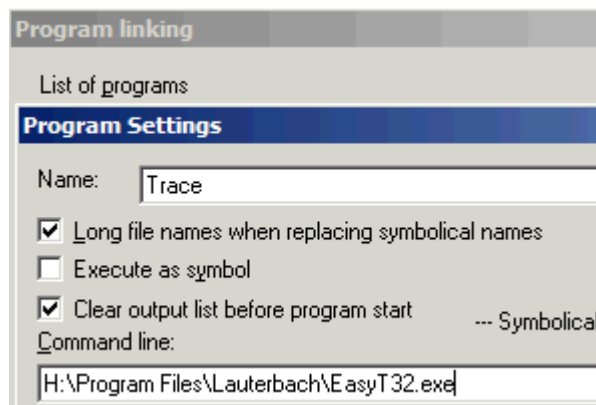


2. Check your Lauterbach installation directory if the file „EasyT32.exe“ exists already. When it has not been copied during the installation, download the Lauterbach Integration Zip-Archive from EASYCODE´s Download page and extract the „EasyT32.exe“, recommend in your EasyCODE or Lauterbach directory. EasyT32 can be started from the command line or create a shortcut to your desktop.

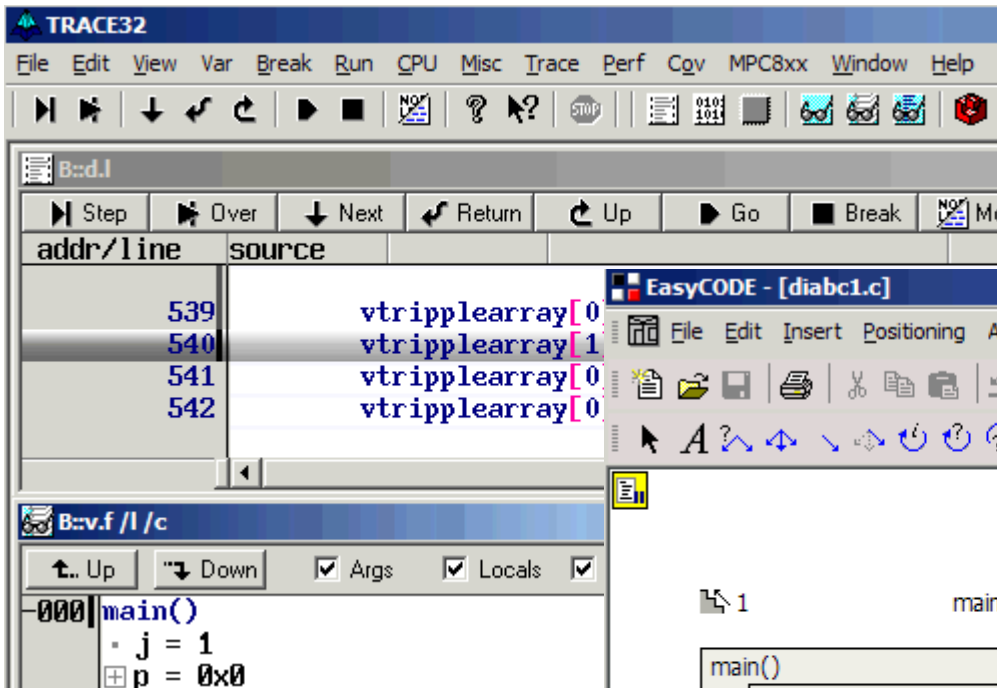
3. Alternatively, EasyCODE offers to run EasyT32 directly from the Editors toolbar.

Run the "Program Linking" dialog from the „Options“ menu. Enter a unique name and the command line to EasyT32. More information is not needed to load the active file from TRACE 32 and start debugging on the structured chart.

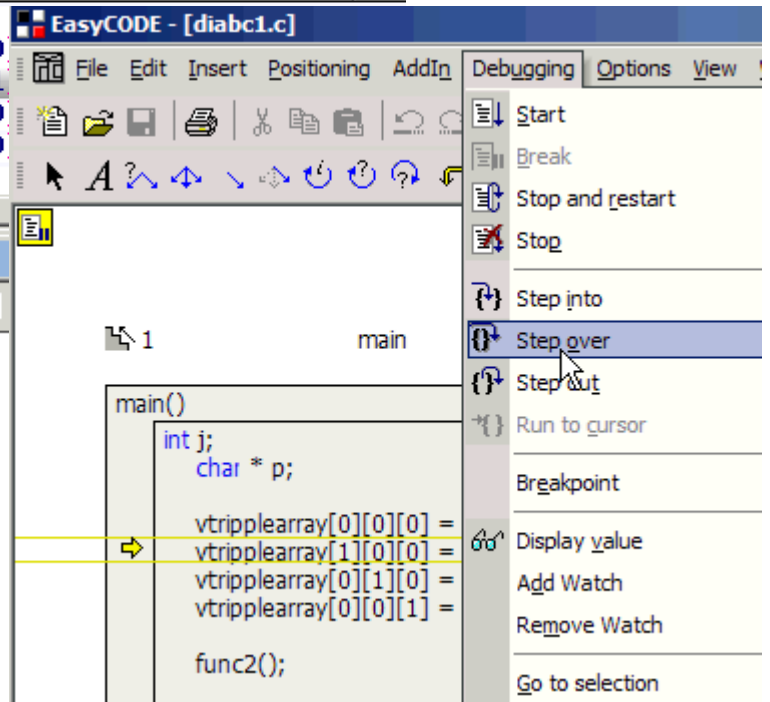
The tools communicate over EasyCODE´s IEC-Debug interface. TRACE 32 must run to use it this way.



4. This integration allows debugging with the EasyCODE Editor directly on the structured chart and using EasyCODE´s improved functionality. So it's possible to modify files to the runtime, comment out changes from the context menu to hold modifications out from the current run. The result of this art of state Tool-communication is shown in the screenshots below.



The screenshots show the synchronous debugging in TRACE 32 and EasyCODE.



The debug Menu in EasyCODE allows using all the operations supported by TRACE 32. Debugger messages are displayed in EasyCODE's Output window simultaneous to the TRACE 32 Output bar.

Enjoy this next generation tool communication, realized by Lauterbach and EASYCODE.

Please contact our EasyCODE Supportteam for any further questions on EasyCODE or if you have any problems using this integrations. Please contact Lauterbach for any questions on TRACE 32.

Contact:

EASYCODE GmbH

Loewenberger Straße 50
D-90475 Nuernberg

Tel: 0049-911-99 840-60
Fax: 0049-911-99 840-97
e-mail: info@easycode.de
support@easycode.de